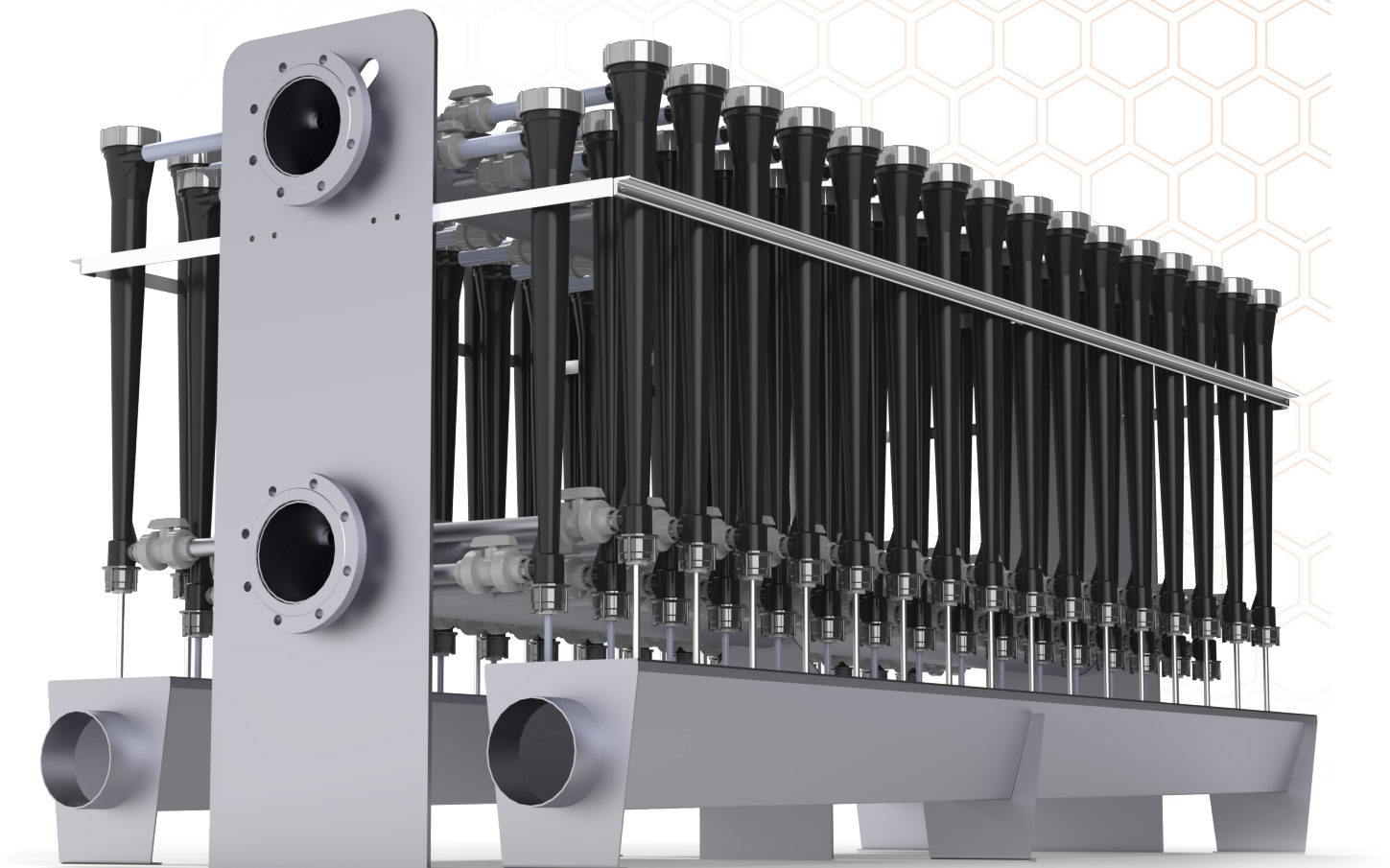


# XX-Clone Through-Flow Cleaner

The XX-Clone cleaner provides a stable rotation pressure and minimum flow disruption to concentrate and remove light contaminants.



# XX-Clone Through-Flow Cleaner

Designed to operate as a secondary cleaner in systems incorporating XTREME reverse cleaners in the primary stage.

The cleaner employs centrifugal force to concentrate light contaminants at the air core so they can be efficiently separated from the good pulp slurry. Because the energy for the separation comes only from the feed pump, there are no moving parts in the cleaners themselves. Engineered for optimum efficiency under very low consistency conditions, the XX-Clone through-flow cleaner removes wax, styrofoam, hot melt adhesives, and other material with a specific gravity less than water.

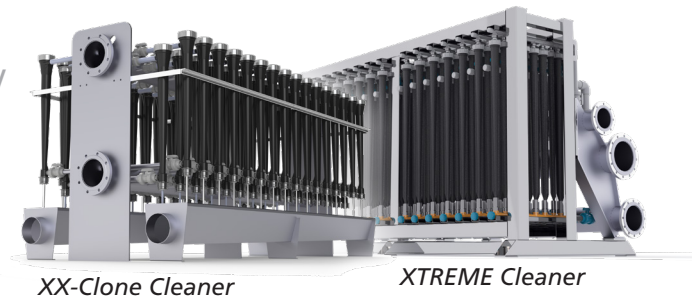
The efficiency of the contaminant removal is influenced by the cleaner's superior geometrical design and the resultant flow properties of the pulp slurry. Other pulp conditions — particularly temperature, consistency, and contaminant level — also affect efficiency but to a lesser degree.

The XX-Clone is a small diameter cleaner with long dwell times. This characteristic, combined with a highly stable flow and low inlet consistency, result in excellent contaminant removal. In situations with high contaminant loading, hydraulic reject rates can be increased to accommodate the larger concentration of debris, such as when a high wax load is encountered, or when a series of highly contaminated wastepaper bales are put into the system.

## Efficiency Through Stability

Our patented inlet maintains rotational stability in the air core for optimum separation. Pressure generated at the inlet port assures high centrifugal forces and maximum contaminant removal.

Operating efficiency depends on a stable rotation pressure and a minimum of disruption of internal flow; two parameters which the XX-Clone provides. The 30 psi (nominal) pressure drop from the feed to the accept port determines the hydraulic capacity and the internal spin velocity of the stock that is optimum for a fine separation of the debris from the pulp fiber.



## Benefits



**Improved through-flow design**  
maximizes contaminant removal



**Optimum debris separation -**  
Patented Kadant design prohibits mixing at the inlet and assures stable rotation of the fluid



**Improves efficiency -** Low feed consistencies promote better collection and removal of contaminants



**Low percentage reject rate by weight** leads to higher system yield and a smaller capital investment for the reject handling system



**Low percentage reject rate by volume** allows installation of a smaller clarifier, a huge capital savings



**Reduce capital cost -** XX-Clones are easily retrofitted onto existing X-Clone manifolds and frames

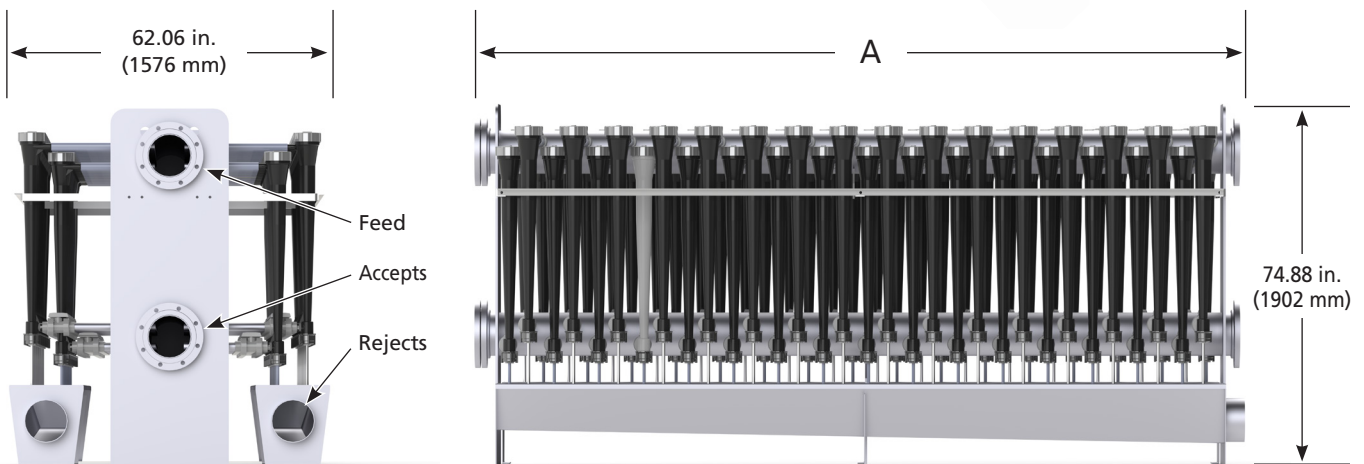
## The highly stable flow results in excellent contaminant removal

Removes wax, styrofoam, polystyrene, hot melt adhesives, and other material with a specific gravity less than water

XX-Clone™ Through-Flow Cleaner				
Unit Size	A		Feed, Accept, Reject Diameter	
40	98.8 in.	2509 mm	8 in.	203 mm
44	107.6 in.	2734 mm	8 in.	203 mm
48	116.5 in.	2959 mm	8 in.	203 mm
52	125.3 in.	3184 mm	8 in.	203 mm
56	134.2 in.	3409 mm	8 in.	203 mm
60	143.1 in.	3634 mm	8 in.	203 mm
64	151.9 in.	3859 mm	8 in.	203 mm
68	106.8 in.	4084 mm	8 in.	203 mm
72	169.6 in.	4309 mm	8 in.	203 mm
76	178.5 in.	4534 mm	8 in.	203 mm



XX-Clone cleaner cones feature our quick-release reject tip for easy maintenance and a plug-free operation.



General Dimensions - Not certified for construction or installation. Guards omitted for clarity but perimeter guards are recommended.

US Patent Number 5,769,243 (expired)

## A Trusted Partner

Stock preparation is in our DNA. We know this industry like few others – your equipment, your processes, and your challenges. We have the know-how and tools to elevate the efficiency of your production. Our team can help monitor, maintain, and upgrade your line, providing process improvements, replacement parts, rebuilds, and comprehensive maintenance plans.

We understand what it takes to remain competitive, protect your investment, and extend the life of your stock preparation assets. To that goal, we offer:

- Field services, inspections, and audits
- Rebuilds and retrofits
- Upgrades and modernizations
- Maintenance and service contracts
- Process control solutions
- Replacement upgrades and spare parts

**Certified Parts and Service 24 Hour Hotline for North America: 1-800-448-5422**

## Expertise to Empower You

Our team is there for you at every step. We help you select the right options to best meet your specific needs.

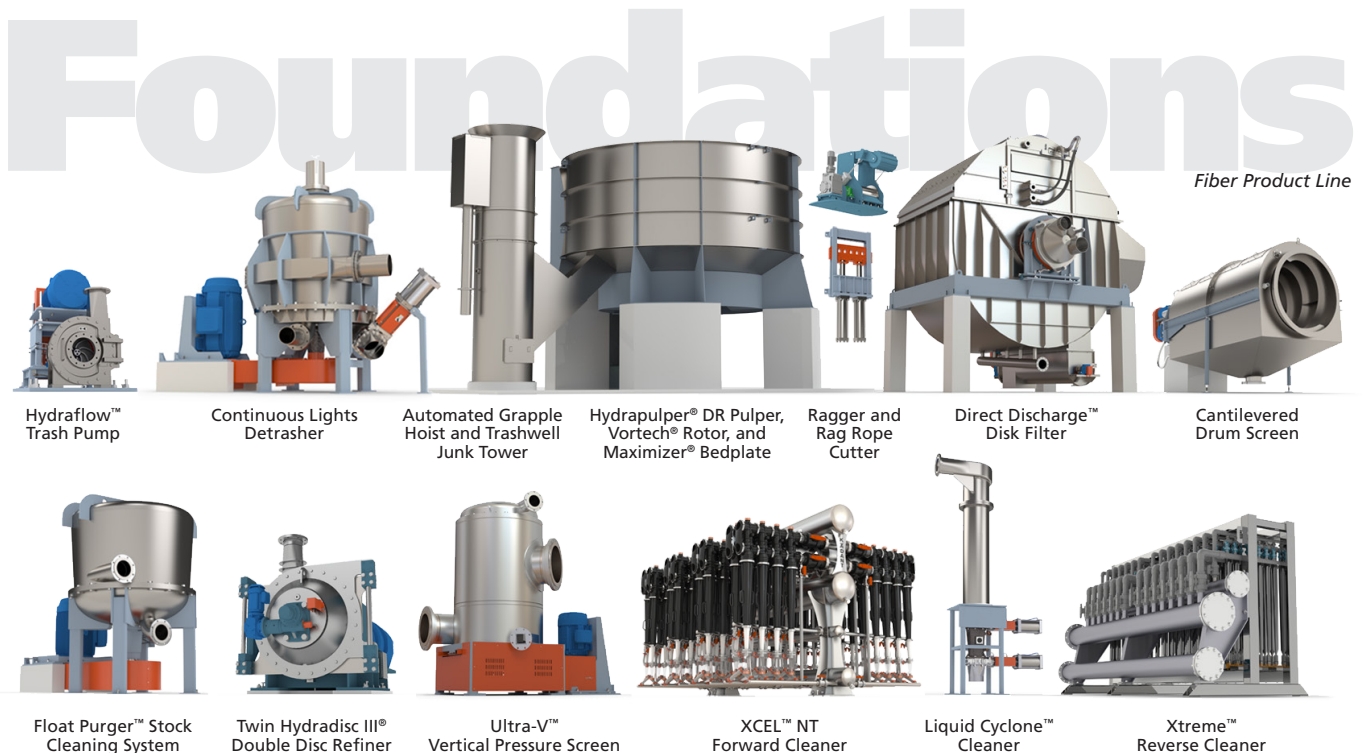
We have generations of experience, a history of innovation, and a proven record of success across the globe. Our skilled engineers, process professionals, application experts, manufacturing, and field service teams have thousands of successful installations to their credit.

## Get You Running, Keep You Running

Our technical service and support teams are ready. We provide superior guidance in the planning, design, engineering, installations, and start-up of your systems. Our products and expertise cover the full range of stock preparation and pulping, including:

- Pulping
- Refining and dispersing
- Screening
- Reject handling
- Cleaning
- Recovery systems
- Thickening
- Heat transfer
- Deinking
- Pulp washing
- Detrashing
- Reausticizing

The Kadant Black Clawson **Foundations** product line offers a full range of fiber processing equipment and services.



For patent information about this and other Kadant products visit <https://kadant.com/en/patents>

# KADANT

[fiberprocessing.kadant.com](https://fiberprocessing.kadant.com) Kadant is a global supplier of high-value, critical components and engineered systems used in process industries worldwide.

North America, Central America, and Japan:

Kadant Black Clawson LLC  
1425 Kingsview Drive  
Lebanon, OH 45036 USA  
Tel: +1-513-229-8100  
Email: [info@kadant.com](mailto:info@kadant.com)

China, Taiwan, and South Korea:

Kadant Fiberline (China) Co. Ltd.  
STE 1960, Beijing Sunflower Tower  
37 Maizidian Street, Chaoyang  
District, Beijing 100125 China  
Phone: +86-10-65813011/12/13  
Email: [Marketing.KFC@kadant.com](mailto:Marketing.KFC@kadant.com)

EMEA, APAC, and South America:

Kadant Lamort SAS  
39, rue de la Fontaine Ludot,  
B. P. 30046  
Vitry-le-Francois cedex 51302  
Phone: +33-26-74-80-80  
Email: [kadant.lamort@kadant.com](mailto:kadant.lamort@kadant.com)

Kadant Noss AB  
Malmgatan 25  
602 23 Norrkoping, Sweden  
Phone: +46-(0)-11-23-15-00  
Email: [info.kadantnoss@kadant.com](mailto:info.kadantnoss@kadant.com)

XX-Clone Cleaner  
©2024 Kadant Inc  
01/2024